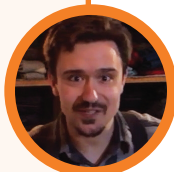


Lumberjack Supplies: Barn Boss



As the barn boss, you will be working with the horses all day making sure they have plenty of food, and are ready to go when the workday starts at “Can See.” You will be moving in and out of the barn all day and cleaning up after the horses. Do you think one pair of socks will be enough? Being new, you will have the bunk furthest from the stove in the bunkhouse, so you will want to purchase another blanket.

—Clerk

Your job: Barn Boss

Your pay: \$20/month

Start Date: November 1, 1900

End Date: March 31, 1901

Camp supplies

Long underwear

\$2.00/undershirt

\$2.00/drawers

Wool socks

\$0.65/pair (cheap quality)

\$0.75/pair (best quality)

Cotton socks

\$0.25/pair (not as warm as wool)

Scotch cap

\$0.75/each

Wool shirt

\$2.00/each

Malone wool pants

\$2.75/pair

Horsehide mitts

\$1.00/pair

Wool Mackinaw jacket

\$4.25/each

Blanket

\$2.00/each

You brought the following items along to camp: 1 pair of cotton socks; 1 pair of old boots; 1 jacket; 1 pair of mitts; 1 pair of pants; 2 shirts; 1 stocking cap.

Looking at what you brought with you, and what your job is, the clerk suggests that you purchase at least two pairs of the cheap wool socks, a blanket, and long underwear. You can follow the clerk’s advice, add to his suggestions, or make your own selections. However, you need to purchase a minimum of three different items. **In the box on the next page write a paragraph explaining why you purchased the items you selected.**

Item	Quantity	Calculation	Total

Monthly wage: _____ Total bill: _____ Money left (first month): _____

Why you purchased the items you selected?

Lumberjack Supplies: Clerk



As the pencil pusher, you will be working in the camp wanigan most of the day, and working with figures. Remember though, you may be asked to help out in other locales like the cookhouse or the barn when needed. Did you bring your mitts? Being new, you will have the bunk furthest from the wanigan stove, so you will want to purchase another blanket.

—Clerk

Your job: Clerk

Your pay: \$35/month

Start Date: November 1, 1900

End Date: March 31, 1901

Camp supplies

Long underwear

\$2.00/undershirt

\$2.00/drawers

Wool socks

\$0.65/pair (cheap quality)

\$0.75/pair (best quality)

Cotton socks

\$0.25/pair (not as warm as wool)

Scotch cap

\$0.75/each

Wool shirt

\$2.00/each

Malone wool pants

\$2.75/pair

Horsehide mitts

\$1.00/pair

Wool Mackinaw jacket

\$4.25/each

Blanket

\$2.00/each

You brought the following items along to camp: 1 pair of cotton socks; 1 pair of boots; 1 jacket; 1 pair of mitts; 1 pair of pants; 1 shirt; 1 stocking cap; long underwear.

Looking at what you brought with you and what your job is, the clerk suggests that you purchase at least two shirts, a blanket, and three pairs of cotton socks. You can follow the clerk's advice, add to his suggestions, or make your own selections. However, you need to purchase a minimum of three different items. **In the box on the next page write a paragraph explaining why you purchased the items you selected.**

Item	Quantity	Calculation	Total

Monthly wage: _____ Total bill: _____ Money left (first month): _____

Why you purchased the items you selected?

Lumberjack Supplies: Cookee



As the cookee, you will be working in the cookhouse helping the cook with all three meals of the day. It is also your job to bring lunch to the men with the horse and swingdingle, so make sure you have enough socks and mitts to be outside over lunch. Being new at camp, you will be given the bunk furthest from the stove, so you will want to purchase another blanket.

—Clerk

Your job: Cookee

Your pay: \$25/month

Start Date: November 1, 1900

End Date: March 31, 1901

Camp supplies

Long underwear

\$2.00/undershirt

\$2.00/drawers

Wool socks

\$0.65/pair (cheap quality)

\$0.75/pair (best quality)

Cotton socks

\$0.25/pair (not as warm as wool)

Scotch cap

\$0.75/each

Wool shirt

\$2.00/each

Malone wool pants

\$2.75/pair

Horsehide mitts

\$1.00/pair

Wool Mackinaw jacket

\$4.25/each

Blanket

\$2.00/each

You brought the following items along to camp: 1 pair of cotton socks; 1 pair of boots; 1 jacket; 1 pair of pants; 1 shirt.

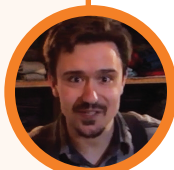
Looking at what you brought with you, and what your job is, the clerk suggests that you purchase at least two pairs of the cheap quality wool socks, a blanket, long underwear, and two pairs of horsehide mitts. You can follow the clerk's advice, add to his suggestions, or make your own selections. However, you need to purchase a minimum of three different items. **In the box on the next page write a paragraph explaining why you purchased the items you selected.**

Item	Quantity	Calculation	Total

Monthly wage: _____ Total bill: _____ Money left (first month): _____

Why you purchased the items you selected?

Lumberjack Supplies: Road Monkey



As the road monkey, you have the important job of cleaning up the trails that we use to bring the logs to the river. That means cleaning up horse droppings, making sure the paths are clear of bark, and are well iced. You are the lowest paid jack in camp, but have an important job. You'll be spending all day outside, so make sure you have enough pairs of wool socks and mitts to trade out. Also, as the greenhorn in camp, you will have the bunk furthest from the stove, so you will want to purchase another blanket.

—Clerk

Your job: Road Monkey

Your pay: \$15/month

Start Date: November 1, 1900

End Date: March 31, 1901

Camp supplies

Long underwear

\$2.00/undershirt

\$2.00/drawers

Wool socks

\$0.65/pair (cheap quality)

\$0.75/pair (best quality)

Cotton socks

\$0.25/pair (not as warm as wool)

Scotch cap

\$0.75/each

Wool shirt

\$2.00/each

Malone wool pants

\$2.75/pair

Horsehide mitts

\$1.00/pair

Wool Mackinaw jacket

\$4.25/each

Blanket

\$2.00/each

You brought the following items along to camp: 1 pair of cotton socks; 1 pair of old boots; 1 jacket; 1 pair of mitts; 1 pair of pants; 2 shirts; 1 stocking cap.

Looking at what you brought with you and what your job is, Elmer suggests that you purchase at least one pair of horsehide mitts, two pairs of the best quality wool socks, a blanket, and long underwear. You can follow Elmer's advice, add to his suggestions, or make your own selections. However, you need to purchase a minimum of three different items. **In the box on the next page write a paragraph explaining why you purchased the items you selected.**

Item	Quantity	Calculation	Total

Monthly wage: _____ Total bill: _____ Money left (first month): _____

Why you purchased the items you selected?

Going to Town?

Job: **Barn Boss**

Pay: **\$20/month**

Date: **November, 1900**



Now that you know the prices at camp, you may decide you want to go into town to get your supplies instead. They have more items and cheaper prices. But remember, you lose two days of pay while walking to town, and another two days pay while walking back, so you need to decide if it is worth it.

Use this worksheet to analyze the cost savings of items purchased in town rather than in the camp. You will need to balance any savings against four days of lost wages. If an item you wish to purchase is not available at camp, write N/A in the Price, Quantity, Total, and Savings columns. **After completing your analysis on this worksheet, write a paragraph on the next page justifying your decision to go to town or stay in camp.** Remember, buying items that are not available in camp might be a good reason to go to town, but doing so might anger the push. He needs all of his jacks in the woods!

—Clerk

Town supplies

Long underwear

\$1.90/undershirt

\$1.90/drawers

Wool socks

\$0.60/pair (cheap quality)

\$0.75/pair (best quality)

Cotton socks

\$0.20/pair (not as warm as wool)

Scotch cap

\$0.65/each

Wool shirt

\$1.25/each

Malone wool pants

\$2.55/pair

Horsehide mitts

\$1.00/pair

Wool Mackinaw jacket

\$4.00/each

Blanket

\$1.90/each

Handkerchiefs

\$0.05/each

Harmonica

\$0.50/each

Cotton shirt, button

\$0.95/each

Wool shirt

\$2.00/each

Suspenders

\$0.50/each

Item	Price	Quantity	Total Cost	Savings if purchased in town
	Camp			
	Town			
	Camp			
	Town			
	Camp			
	Town			
	Camp			
	Town			
	Camp			
	Town			
Monthly pay:	Days in Nov.	Daily pay	Days missed	Total lost wages:

Total savings or additional costs of going to town (for items available in both camp and town only): _____

Please write a paragraph justifying your decision to go to town or stay in camp.

Going to Town?

Job: **Clerk**

Pay: **\$35/month**

Date: **November, 1900**



Now that you know the prices at camp, you may decide you want to go into town to get your supplies instead. They have more items and cheaper prices. But remember, you lose two days of pay while walking to town, and another two days pay while walking back, so you need to decide if it is worth it.

Use this worksheet to analyze the cost savings of items purchased in town rather than in the camp. You will need to balance any savings against four days of lost wages. If an item you wish to purchase is not available at camp, write N/A in the Price, Quantity, Total, and Savings columns. **After completing your analysis on this worksheet, write a paragraph on the next page justifying your decision to go to town or stay in camp.** Remember, buying items that are not available in camp might be a good reason to go to town, but doing so might anger the push. He needs all of his jacks in the woods!

—Clerk

Town supplies

Long underwear

\$1.90/undershirt

\$1.90/drawers

Wool socks

\$0.60/pair (cheap quality)

\$0.75/pair (best quality)

Cotton socks

\$0.20/pair (not as warm as wool)

Scotch cap

\$0.65/each

Wool shirt

\$1.25/each

Malone wool pants

\$2.55/pair

Horsehide mitts

\$1.00/pair

Wool Mackinaw jacket

\$4.00/each

Blanket

\$1.90/each

Handkerchiefs

\$0.05/each

Harmonica

\$0.50/each

Cotton shirt, button

\$0.95/each

Wool shirt

\$2.00/each

Suspenders

\$0.50/each

Item	Price	Quantity	Total Cost	Savings if purchased in town
	Camp			
	Town			
	Camp			
	Town			
	Camp			
	Town			
	Camp			
	Town			
	Camp			
	Town			
Monthly pay:	Days in Nov.	Daily pay	Days missed	Total lost wages:

Total savings or additional costs of going to town (for items available in both camp and town only): _____

Please write a paragraph justifying your decision to go to town or stay in camp.

Going to Town?

Job: **Cooke**

Pay: **\$25/month**

Date: **November, 1900**



Now that you know the prices at camp, you may decide you want to go into town to get your supplies instead. They have more items and cheaper prices. But remember, you lose two days of pay while walking to town, and another two days pay while walking back, so you need to decide if it is worth it.

Use this worksheet to analyze the cost savings of items purchased in town rather than in the camp. You will need to balance any savings against four days of lost wages. If an item you wish to purchase is not available at camp, write N/A in the Price, Quantity, Total, and Savings columns. **After completing your analysis on this worksheet, write a paragraph on the next page justifying your decision to go to town or stay in camp.** Remember, buying items that are not available in camp might be a good reason to go to town, but doing so might anger the push. He needs all of his jacks in the woods!

—Clerk

Town supplies

Long underwear

\$1.90/undershirt

\$1.90/drawers

Wool socks

\$0.60/pair (cheap quality)

\$0.75/pair (best quality)

Cotton socks

\$0.20/pair (not as warm as wool)

Scotch cap

\$0.65/each

Wool shirt

\$1.25/each

Malone wool pants

\$2.55/pair

Horsehide mitts

\$1.00/pair

Wool Mackinaw jacket

\$4.00/each

Blanket

\$1.90/each

Handkerchiefs

\$0.05/each

Harmonica

\$0.50/each

Cotton shirt, button

\$0.95/each

Wool shirt

\$2.00/each

Suspenders

\$0.50/each

Item	Price	Quantity	Total Cost	Savings if purchased in town
	Camp			
	Town			
	Camp			
	Town			
	Camp			
	Town			
	Camp			
	Town			
	Camp			
	Town			
Monthly pay:	Days in Nov.	Daily pay	Days missed	Total lost wages:

Total savings or additional costs of going to town (for items available in both camp and town only): _____

Please write a paragraph justifying your decision to go to town or stay in camp.

Going to Town?

Job: **Road Monkey**

Pay: **\$15/month**

Date: **November, 1900**



Now that you know the prices at camp, you may decide you want to go into town to get your supplies instead. They have more items and cheaper prices. But remember, you lose two days of pay while walking to town, and another two days pay while walking back, so you need to decide if it is worth it.

Use this worksheet to analyze the cost savings of items purchased in town rather than in the camp. You will need to balance any savings against four days of lost wages. If an item you wish to purchase is not available at camp, write N/A in the Price, Quantity, Total, and Savings columns. **After completing your analysis on this worksheet, write a paragraph on the next page justifying your decision to go to town or stay in camp.** Remember, buying items that are not available in camp might be a good reason to go to town, but doing so might anger the push. He needs all of his jacks in the woods!

—Clerk

Town supplies

Long underwear

\$1.90/undershirt

\$1.90/drawers

Wool socks

\$0.60/pair (cheap quality)

\$0.75/pair (best quality)

Cotton socks

\$0.20/pair (not as warm as wool)

Scotch cap

\$0.65/each

Wool shirt

\$1.25/each

Malone wool pants

\$2.55/pair

Horsehide mitts

\$1.00/pair

Wool Mackinaw jacket

\$4.00/each

Blanket

\$1.90/each

Handkerchiefs

\$0.05/each

Harmonica

\$0.50/each

Cotton shirt, button

\$0.95/each

Wool shirt

\$2.00/each

Suspenders

\$0.50/each

Item	Price	Quantity	Total Cost	Savings if purchased in town
	Camp			
	Town			
	Camp			
	Town			
	Camp			
	Town			
	Camp			
	Town			
	Camp			
	Town			
Monthly pay:	Days in Nov.	Daily pay	Days missed	Total lost wages:

Total savings or additional costs of going to town (for items available in both camp and town only): _____

Please write a paragraph justifying your decision to go to town or stay in camp.

Two Weeks Later: Barn Boss



You have been here a few weeks now. Do you have any supplies you need to replace? I know that writing home for more is always a good option. You'll also probably want to get a hospital ticket in case you get injured in camp, so you can get home come spring. They will take care of you in the hospital, and I've heard the service is great.

—Clerk

Job: **Barn Boss**

Pay: **\$20/month**

Date: **November 1, 1900 – March 31, 1901**

Camp supplies

Long underwear

\$2.00/undershirt

\$2.00/drawers

Wool socks

\$0.65/pair (cheap quality)

\$0.75/pair (best quality)

Cotton socks

\$0.25/pair (not as warm as wool)

Scotch cap

\$0.75/each

Wool shirt

\$2.00/each

Malone wool pants

\$2.75/pair

Horsehide mitts

\$1.00/pair

Wool Mackinaw jacket

\$4.25/each

Blanket

\$2.00/each

Minards liniment

\$0.25/bottle

Hospital ticket

\$5.00

Lead pencils

\$0.05/each

Paper

\$0.02/sheet

Postage stamps

\$0.02/each

Items previously purchased	Cost	Quantity	Calculation	Total
Additional items purchased	Cost	Quantity	Calculation	Total

Monthly pay	Number of months	Gross pay	Subtract any missed days	Net pay

Net pay _____

Total wanigan bill _____

Take-home pay _____

Two Weeks Later: Clerk



You have been here a few weeks now. Do you have any supplies you need to replace? I know that writing home for more is always a good option. You'll also probably want to get a hospital ticket in case you get injured in camp, so you can get home come spring. They will take care of you in the hospital, and I've heard the service is great.

—Clerk

Job: **Clerk**

Pay: **\$35/month**

Date: **November 1, 1900 – March 31, 1901**

Camp supplies

Long underwear

\$2.00/undershirt

\$2.00/drawers

Wool socks

\$0.65/pair (cheap quality)

\$0.75/pair (best quality)

Cotton socks

\$0.25/pair (not as warm as wool)

Scotch cap

\$0.75/each

Wool shirt

\$2.00/each

Malone wool pants

\$2.75/pair

Horsehide mitts

\$1.00/pair

Wool Mackinaw jacket

\$4.25/each

Blanket

\$2.00/each

Minards liniment

\$0.25/bottle

Hospital ticket

\$5.00

Lead pencils

\$0.05/each

Paper

\$0.02/sheet

Postage stamps

\$0.02/each

Items previously purchased	Cost	Quantity	Calculation	Total
Additional items purchased	Cost	Quantity	Calculation	Total

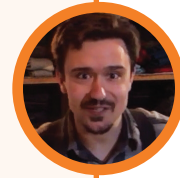
Monthly pay	Number of months	Gross pay	Subtract any missed days	Net pay

Net pay _____

Total wanigan bill _____

Take-home pay _____

Two Weeks Later: Cookee



You have been here a few weeks now. Do you have any supplies you need to replace? I know that writing home for more is always a good option. You'll also probably want to get a hospital ticket in case you get injured in camp, so you can get home come spring. They will take care of you in the hospital, and I've heard the service is great.

—Clerk

Job: **Cookee**

Pay: **\$25/month**

Date: **November 1, 1900 – March 31, 1901**

Camp supplies

Long underwear

\$2.00/undershirt

\$2.00/drawers

Wool socks

\$0.65/pair (cheap quality)

\$0.75/pair (best quality)

Cotton socks

\$0.25/pair (not as warm as wool)

Scotch cap

\$0.75/each

Wool shirt

\$2.00/each

Malone wool pants

\$2.75/pair

Horsehide mitts

\$1.00/pair

Wool Mackinaw jacket

\$4.25/each

Blanket

\$2.00/each

Minards liniment

\$0.25/bottle

Hospital ticket

\$5.00

Lead pencils

\$0.05/each

Paper

\$0.02/sheet

Postage stamps

\$0.02/each

Items previously purchased	Cost	Quantity	Calculation	Total
Additional items purchased	Cost	Quantity	Calculation	Total

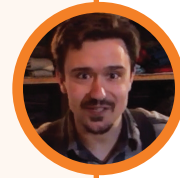
Monthly pay	Number of months	Gross pay	Subtract any missed days	Net pay

Net pay _____

Total wanigan bill _____

Take-home pay _____

Two Weeks Later: Road Monkey



You have been here a few weeks now. Do you have any supplies you need to replace? I know that writing home for more is always a good option. You'll also probably want to get a hospital ticket in case you get injured in camp, so you can get home come spring. They will take care of you in the hospital, and I've heard the service is great.

—Clerk

Job: **Road Monkey**

Pay: **\$15/month**

Date: **November 1, 1900 – March 31, 1901**

Camp supplies

Long underwear

\$2.00/undershirt

\$2.00/drawers

Wool socks

\$0.65/pair (cheap quality)

\$0.75/pair (best quality)

Cotton socks

\$0.25/pair (not as warm as wool)

Scotch cap

\$0.75/each

Wool shirt

\$2.00/each

Malone wool pants

\$2.75/pair

Horsehide mitts

\$1.00/pair

Wool Mackinaw jacket

\$4.25/each

Blanket

\$2.00/each

Minards liniment

\$0.25/bottle

Hospital ticket

\$5.00

Lead pencils

\$0.05/each

Paper

\$0.02/sheet

Postage stamps

\$0.02/each

Items previously purchased	Cost	Quantity	Calculation	Total
Additional items purchased	Cost	Quantity	Calculation	Total

Monthly pay	Number of months	Gross pay	Subtract any missed days	Net pay

Net pay _____

Total wanigan bill _____

Take-home pay _____