

Going to Town?

Job: **Barn Boss**

Pay: **\$20/month**

Date: **November, 1900**



Now that you know the prices at camp, you may decide you want to go into town to get your supplies instead. They have more items and cheaper prices. But remember, you lose two days of pay while walking to town, and another two days pay while walking back, so you need to decide if it is worth it.

Use this worksheet to analyze the cost savings of items purchased in town rather than in the camp. You will need to balance any savings against four days of lost wages. If an item you wish to purchase is not available at camp, write N/A in the Price, Quantity, Total, and Savings columns. **After completing your analysis on this worksheet, write a paragraph on the next page justifying your decision to go to town or stay in camp.** Remember, buying items that are not available in camp might be a good reason to go to town, but doing so might anger the push. He needs all of his jacks in the woods!

—Clerk

Town supplies

Long underwear

\$1.90/undershirt

\$1.90/drawers

Wool socks

\$0.60/pair (cheap quality)

\$0.75/pair (best quality)

Cotton socks

\$0.20/pair (not as warm as wool)

Scotch cap

\$0.65/each

Wool shirt

\$1.25/each

Malone wool pants

\$2.55/pair

Horsehide mitts

\$1.00/pair

Wool Mackinaw jacket

\$4.00/each

Blanket

\$1.90/each

Handkerchiefs

\$0.05/each

Harmonica

\$0.50/each

Cotton shirt, button

\$0.95/each

Wool shirt

\$2.00/each

Suspenders

\$0.50/each

Item	Price	Quantity	Total Cost	Savings if purchased in town
	Camp			
	Town			
	Camp			
	Town			
	Camp			
	Town			
	Camp			
	Town			
	Camp			
	Town			
Monthly pay:	Days in Nov.	Daily pay	Days missed	Total lost wages:

Total savings or additional costs of going to town (for items available in both camp and town only): _____

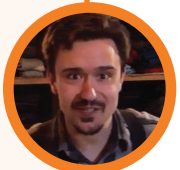
Please write a paragraph justifying your decision to go to town or stay in camp.

Going to Town?

Job: **Clerk**

Pay: **\$35/month**

Date: **November, 1900**



Now that you know the prices at camp, you may decide you want to go into town to get your supplies instead. They have more items and cheaper prices. But remember, you lose two days of pay while walking to town, and another two days pay while walking back, so you need to decide if it is worth it.

Use this worksheet to analyze the cost savings of items purchased in town rather than in the camp. You will need to balance any savings against four days of lost wages. If an item you wish to purchase is not available at camp, write N/A in the Price, Quantity, Total, and Savings columns. **After completing your analysis on this worksheet, write a paragraph on the next page justifying your decision to go to town or stay in camp.** Remember, buying items that are not available in camp might be a good reason to go to town, but doing so might anger the push. He needs all of his jacks in the woods!

—Clerk

Town supplies

Long underwear

\$1.90/undershirt

\$1.90/drawers

Wool socks

\$0.60/pair (cheap quality)

\$0.75/pair (best quality)

Cotton socks

\$0.20/pair (not as warm as wool)

Scotch cap

\$0.65/each

Wool shirt

\$1.25/each

Malone wool pants

\$2.55/pair

Horsehide mitts

\$1.00/pair

Wool Mackinaw jacket

\$4.00/each

Blanket

\$1.90/each

Handkerchiefs

\$0.05/each

Harmonica

\$0.50/each

Cotton shirt, button

\$0.95/each

Wool shirt

\$2.00/each

Suspenders

\$0.50/each

Item	Price	Quantity	Total Cost	Savings if purchased in town
	Camp			
	Town			
	Camp			
	Town			
	Camp			
	Town			
	Camp			
	Town			
	Camp			
	Town			
Monthly pay:	Days in Nov.	Daily pay	Days missed	Total lost wages:

Total savings or additional costs of going to town (for items available in both camp and town only): _____

Please write a paragraph justifying your decision to go to town or stay in camp.

Going to Town?

Job: **Cooke**

Pay: **\$25/month**

Date: **November, 1900**



Now that you know the prices at camp, you may decide you want to go into town to get your supplies instead. They have more items and cheaper prices. But remember, you lose two days of pay while walking to town, and another two days pay while walking back, so you need to decide if it is worth it.

Use this worksheet to analyze the cost savings of items purchased in town rather than in the camp. You will need to balance any savings against four days of lost wages. If an item you wish to purchase is not available at camp, write N/A in the Price, Quantity, Total, and Savings columns. **After completing your analysis on this worksheet, write a paragraph on the next page justifying your decision to go to town or stay in camp.** Remember, buying items that are not available in camp might be a good reason to go to town, but doing so might anger the push. He needs all of his jacks in the woods!

—Clerk

Town supplies

Long underwear

\$1.90/undershirt

\$1.90/drawers

Wool socks

\$0.60/pair (cheap quality)

\$0.75/pair (best quality)

Cotton socks

\$0.20/pair (not as warm as wool)

Scotch cap

\$0.65/each

Wool shirt

\$1.25/each

Malone wool pants

\$2.55/pair

Horsehide mitts

\$1.00/pair

Wool Mackinaw jacket

\$4.00/each

Blanket

\$1.90/each

Handkerchiefs

\$0.05/each

Harmonica

\$0.50/each

Cotton shirt, button

\$0.95/each

Wool shirt

\$2.00/each

Suspenders

\$0.50/each

Item	Price	Quantity	Total Cost	Savings if purchased in town
	Camp			
	Town			
	Camp			
	Town			
	Camp			
	Town			
	Camp			
	Town			
	Camp			
	Town			
Monthly pay:	Days in Nov.	Daily pay	Days missed	Total lost wages:

Total savings or additional costs of going to town (for items available in both camp and town only): _____

Please write a paragraph justifying your decision to go to town or stay in camp.

Going to Town?

Job: **Road Monkey**

Pay: **\$15/month**

Date: **November, 1900**



Now that you know the prices at camp, you may decide you want to go into town to get your supplies instead. They have more items and cheaper prices. But remember, you lose two days of pay while walking to town, and another two days pay while walking back, so you need to decide if it is worth it.

Use this worksheet to analyze the cost savings of items purchased in town rather than in the camp. You will need to balance any savings against four days of lost wages. If an item you wish to purchase is not available at camp, write N/A in the Price, Quantity, Total, and Savings columns. **After completing your analysis on this worksheet, write a paragraph on the next page justifying your decision to go to town or stay in camp.** Remember, buying items that are not available in camp might be a good reason to go to town, but doing so might anger the push. He needs all of his jacks in the woods!

—Clerk

Town supplies

Long underwear

\$1.90/undershirt

\$1.90/drawers

Wool socks

\$0.60/pair (cheap quality)

\$0.75/pair (best quality)

Cotton socks

\$0.20/pair (not as warm as wool)

Scotch cap

\$0.65/each

Wool shirt

\$1.25/each

Malone wool pants

\$2.55/pair

Horsehide mitts

\$1.00/pair

Wool Mackinaw jacket

\$4.00/each

Blanket

\$1.90/each

Handkerchiefs

\$0.05/each

Harmonica

\$0.50/each

Cotton shirt, button

\$0.95/each

Wool shirt

\$2.00/each

Suspenders

\$0.50/each

Item	Price	Quantity	Total Cost	Savings if purchased in town
	Camp			
	Town			
	Camp			
	Town			
	Camp			
	Town			
	Camp			
	Town			
	Camp			
	Town			
Monthly pay:	Days in Nov.	Daily pay	Days missed	Total lost wages:

Total savings or additional costs of going to town (for items available in both camp and town only): _____

Please write a paragraph justifying your decision to go to town or stay in camp.